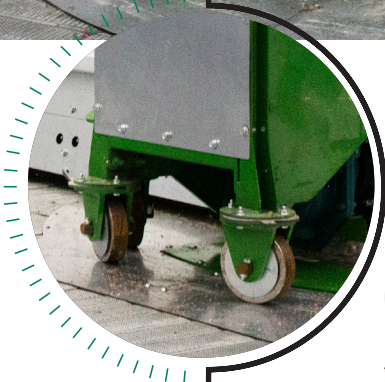


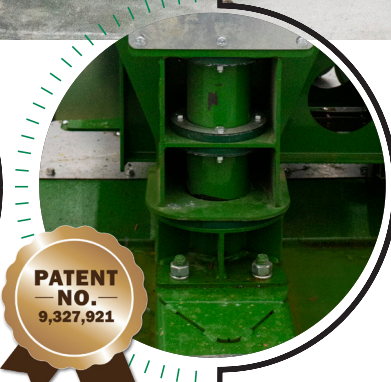


5K COMMERCIAL Zero-Entry Sweep

**FULL FLOOR
OPTION WHEN
USED WITH SUKUP
DRAG CONVEYOR
UNLOADS!**

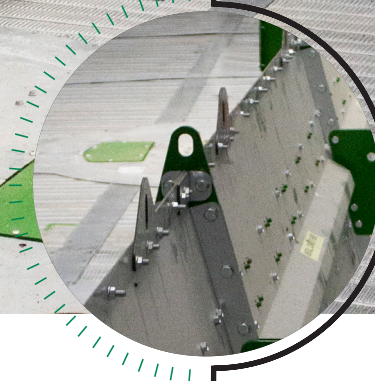


**Heavy-Duty Steel Pivot
Wheels** with bronze
bushings

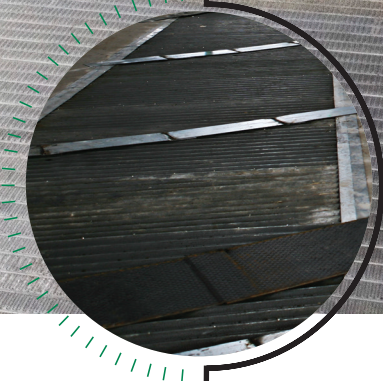


**PATENT
NO. —
9,327,921**

Patented Pivot Point
allows the sweep to
“free-float” to account
for variations in
concrete.



A-shaped shield designed
to better distribute load
from grain.



**Industrial Grade Wear
Track** protects aeration
tunnels.



- **Emergency Stop Button** for enhanced safety.
- **Zero-Entry Automatic Touch Screen Controls** allow the pushers' start and stop points to be user programmed on the touch screen to keep the auger running efficiently based on a particular situation. In automatic mode, the controller senses auger load and advances the sweep without overloading the auger motor, preventing spinning of the pusher tires, which can cause extra wear. The sweep controls also have a manual mode that allows the operator to control sweep advancement.
- **Programmable Logic Controller (PLC)** provides greater reliability.



Sukup Manufacturing Co. ■ www.sukup.com

Box 677 ■ 1555 255th Street ■ Sheffield, Iowa 50475-0677 ■ **ph** 641.892.4222 ■ **fx** 641.892.4629 ■ **info@sukup.com**

Distribution Centers

Cameron, MO 64429
7426 NE 352nd St.
ph 816.649.2226
missouri@sukup.com

Arcola, IL 61910
980 E. State Rte. 133
ph 217.268.3026
illinois@sukup.com

Aurora, NE 68818
1705 Hwy. 34 E.
ph 402.694.5922
nebraska@sukup.com

Defiance, OH 43512
7724 Rte. 66 N.
ph 419.784.9871
ohio@sukup.com

Jonesboro, AR 72403
204 Best Industrial Dr.
ph 870.932.7547
arkansas@sukup.com

Watertown, SD 57201
2701 Piper Ave.
ph 605.882.6697
southdakota@sukup.com