

MIXED-FLOW DRYER EXHAUST DUCT COVERS

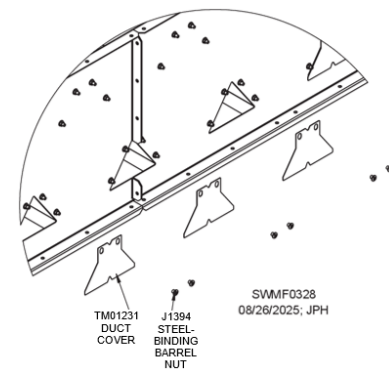


WHAT THEY DO

Duct covers block exhaust air ducts when dryer is not running, helping to prevent pests, debris, and rain from entering mixed-flow grain dryer.

Unique features:

- Covers deter birds from entering and building nests inside dryer, and hamper raccoons from being able to squeeze into ducts.
- Amount of rain entering dryer is minimized. Moisture is easily absorbed in crops like soybeans and rice.
- Covers swing open to allow exhaust air to escape without restricting airflow, and need for cleaning dryer during drying season is minimized.
- Amount of grain that bounces out of the exhaust ducts during initial filling is reduced.



Tables below show quantities of duct covers and attachment hardware. Duct covers should be attached to all ducts on roof and all tiers.

DESCRIPTION	PART #	16' QTY	24' QTY	32' QTY
BARREL NUT	J1394	52	76	100
DUCT COVER	TM01231	22	34	46
HALF DUCT COVER	TM01233	4	4	4

Table 1 - Duct cover parts for each tier

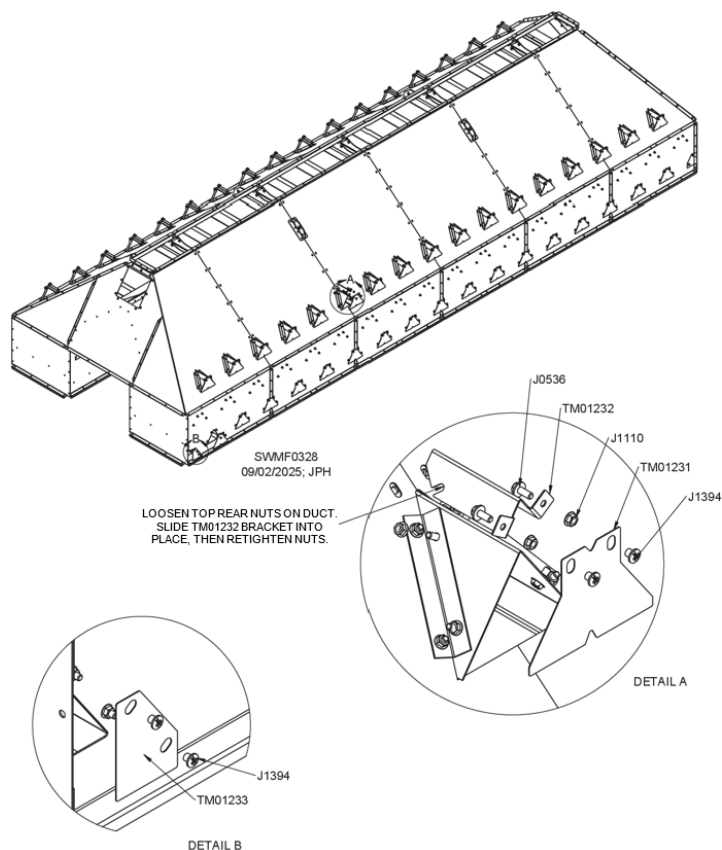
DESCRIPTION	PART #	16' QTY	24' QTY	32' QTY
SCREW, 5/16 - 18 X 3/4"	J0536	44	68	92
WHIZ NUT, 5/16" - 18	J1110	44	68	92
BARREL NUT	J1394	44	68	92
DUCT COVER	TM0131	22	34	46
DUCT BRACKET	TM0132	22	34	46

Table 2 - Duct cover parts for roof module



Duct covers open while dryer running

- Two different duct cover styles - full and half pieces
- Special brackets for attaching covers to ducts on slanted roof of dryer



Sukup Manufacturing Co. | www.sukup.com

Box 677 1555 255th St. | Sheffield, IA 50475-0677 | ph 641.892.4222
fx 641.892.4629 | info@sukup.com

Distribution Centers

Arcola, IL 61910
980 E. State Rte. 133
ph 217.268.3026
illinois@sukup.com

York, NE 68467
2311 N Division Ave
ph 402.534.1108
nebraska@sukup.com

Cameron, MO 64429
7426 NE 352nd St.
ph 816.649.2226
missouri@sukup.com

Defiance, OH 43512
7724 Rte. 66 N.
ph 419.784.9871
ohio@sukup.com

Jonesboro, AR 72403
204 Best Industrial Dr.
ph 870.932.7547
arkansas@sukup.com